

Secondary hot water circulating pumps

SE20B | SE60B



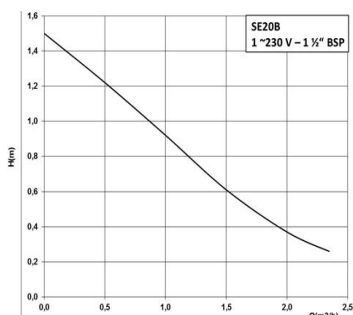
- Glandless circulation pump
- For pipe installation with:
 - constant speed (SE20B)
 - manual, three-stage speed switchover (SE60B)
- Blocking current-proof motor
- Optimum performance, reliability and maintenance free operation
- Ideal for single or multi-pump networks
- Suitable for drinking water only

Technical data

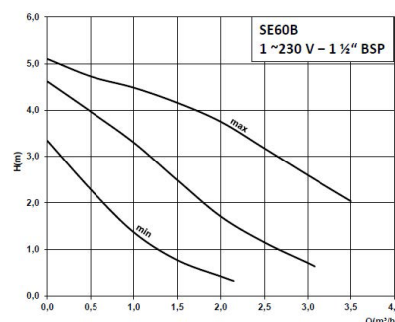
- Approved fluids: Potable water and water for food processing
- Temperature range: 2°C to +65°C
- Max. ambient temp. +40°C
- Rated pressure: PN 10
- Protection class: IP 44
- Mains connection: 1~230 V, 50 Hz
- Bronze pump housing, glass reinforced plastic impeller, ceramic shaft with carbon bearings

Article No.	Model	BSP	Speed (rpm)	Overall length (mm)	Power consumption P1 (W)	Max. Amps (A)	Weight (kg)	Pieces per pallet
4178916	SE20B	1 ½"	1600 - 2200	130	38	0.18	2	256
4178917	SE60B	1 ½"	1000 - 2750	130	99 74 50	0.43	2	256

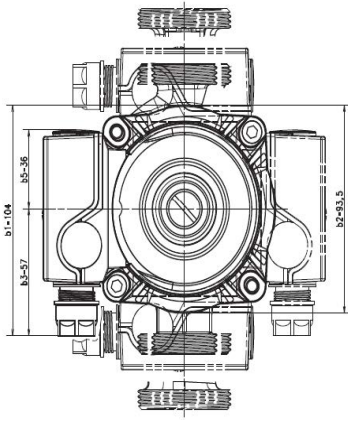
SE20B pump curve



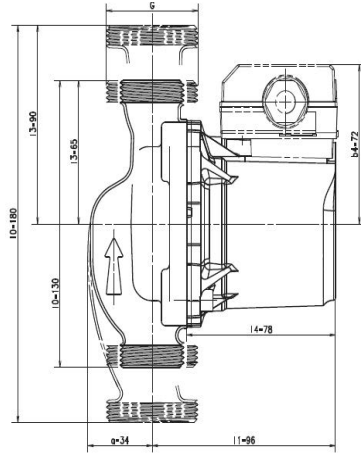
SE60B pump curve



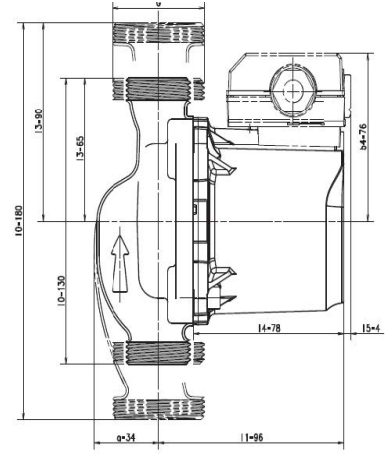
Front



SE20B – side



SE60B – side



Article No.	Model	B1	B2	B3	B4	B5	I0	I1	I3	I4
4178916	SE20B	104	93.5	57	72	36	130	96	65	78
4178917	SE60B	104	93.5	57	76	36	130	96	65	78